

CERTIFICATE OF LOCATION OF GOVERNMENT CORNER

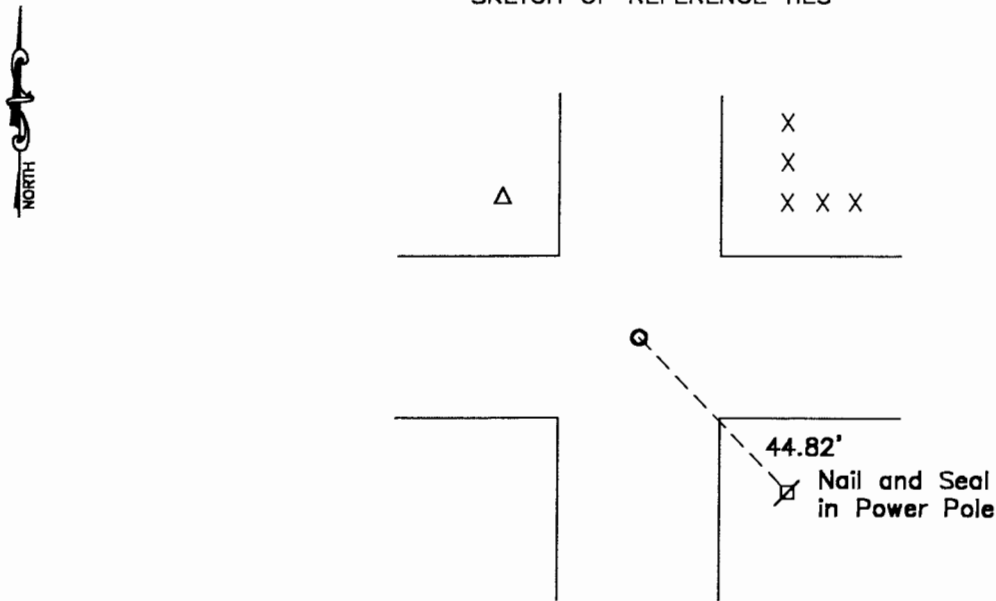
Northeast Corner of Section 32, Township 108, Range 41, 5th P.M.

STATE OF MINNESOTA, County of Murray

At the corner location shown on the sketch:

- On April 5, 2006 found a unrecorded 3/8" iron and then dug with backhoe and found
DATE
a large field stone below iron.
 - left monument as found, lowered monument, removed monument (explain)
- On April 5, 2006 placed a 3/8" iron next to stone and a 1" pipe with seal number
DATE
43844 at surface

SKETCH OF REFERENCE TIES



Minnesota State Plane Coordinate
 System Murray County Datum
 NAD83 (1996)
 N: 200471.042
 E: 495435.473

Statement of evidence relative to this corner location is on back of page.

I hereby certify that this document and the data contained herein was prepared by me or under my direct supervision.

[Signature] June 15, 2006
SIGNATURE DATE

Registration No. 43844

- Land Surveyor, Professional Engineer
- County Surveyor, County Engineer

OFFICE OF THE COUNTY RECORDER
 County of _____

I hereby certify that this document was filed in the Co. Recorders office at _____ .M on the _____ day of _____ A.D. 20 _____

County Recorder _____

By _____, Deputy

DOCUMENT NO. _____

Statement of Evidence

There was nothing recorded for this corner.

On April 5, 2006 Bueltel-Moseng Land Surveying found an unrecorded 3/8" iron. We tied it out and dug with a backhoe. We found a large field stone below the iron. We placed a 3/8" iron next to the stone and set a 1" diameter pipe with seal 43844 at the surface.